

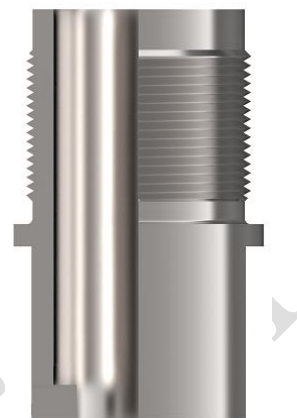
Plug, Seat

Weima Original

P11—Plug, Pull

Pull pipe plug

Part No.	API No
P11-125-15 (XX)	P11-125-15
P11-125 (XX)	P11-125
P11-150-20 (XX)	P11-150-20
P11-150-25 (XX)	P11-150-25
P11-175 (XX)	P11-175
P11-200 (XX)	P11-200
P11-225 (XX)	P11-225



Note:

- 1) “XX” is Material identification symbol.

P12—Plug, Seat

Seat plugs are standard on the plunger of a pump. For jacking traveling seat.

Part No.	API No.
P12-106 (XX)	P12-106
P12-125 (XX)	P12-125
P12-150 (XX)	P12-150
P12-175 (XX)	P12-175
P12-200 (XX)	P12-200
P12-225 (XX)	P12-225
P12-250 (XX)	P12-250



Note:



1) “XX” is Material identification symbol.

1. Pump Material for Plug, Seat

Identification Symbol	Description	Base core hardness	Base material	Base Material Minimum Yield Strength MPa (ksi)
A1	Steel	90HRB~23HRC	UNS G10XX0	345 (50)
A2	Low alloy steel	90HRB~23HRC	UNS G41XX0	345 (50)
A3	Low alloy steel	90HRB~23HRC	UNS G86XX0	345 (50)
A4	Ni/Cu Alloy Steel	83HRB~23HRC	UNS N04400	345 (50)
C5	Brass	60HRB~90HRB	UNS C46400	276 (40)
C6	Stainless steel	79HRB~23HRC	UNS S30400	241 (35)



威马股份
WEIMA OIL & GAS LIFTING

Tel: 0086 531-75919863

Fax: 0086 531-78856601

Website: www.sdweima.com

Email: weima@sdweima.com